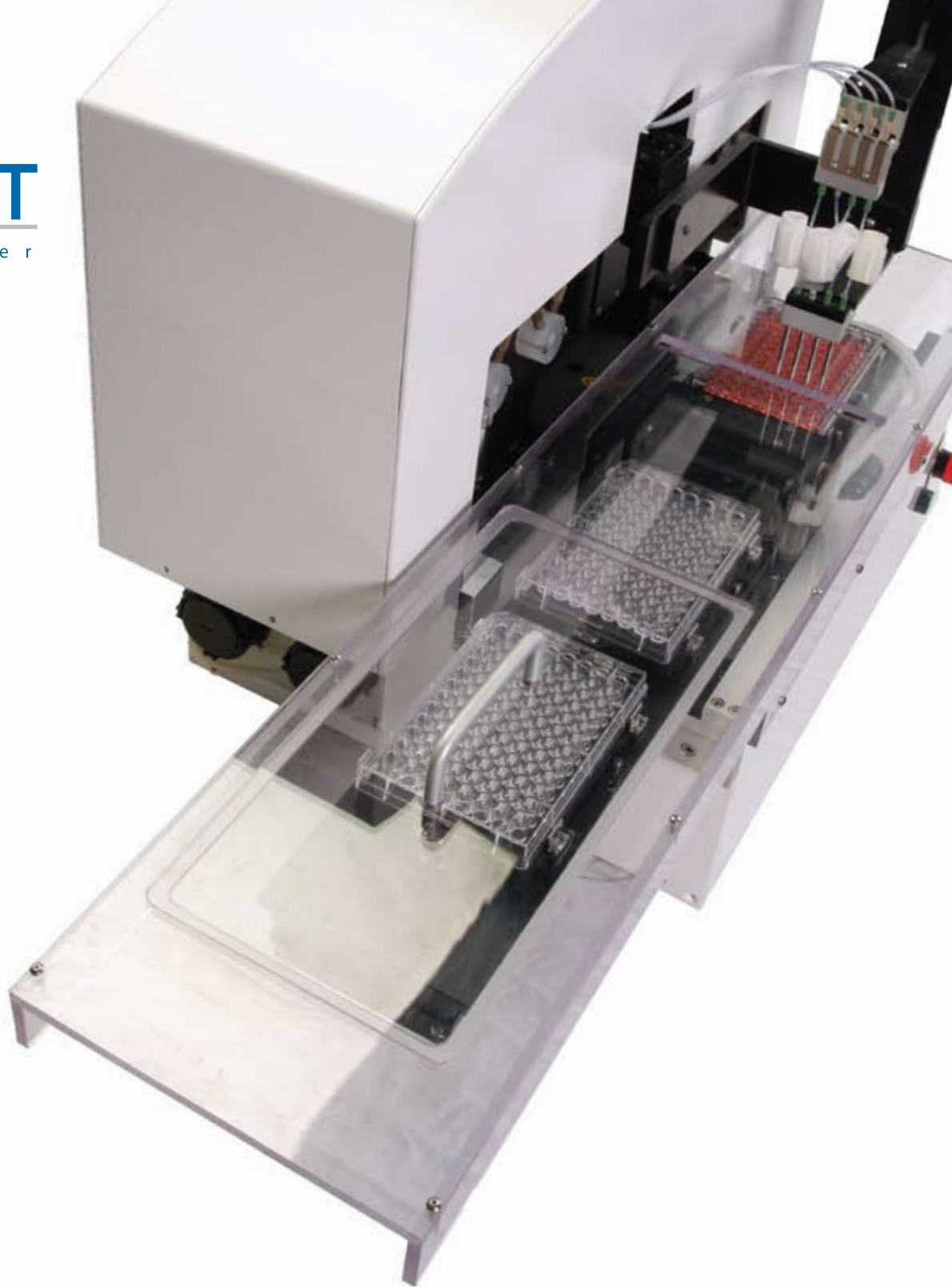


**CELLJET**  
Cell Printer



## CellJet Cell Printer

Fast, Precise, Reliable and Reproducible.

Contamination-Free, Proprietary non-Contact synQUAD Dispensing.

Live Cell Printing for High Content Analysis and Cell Assays.

*Sample. Science. Solutions.*

**DIGILAB**

## LIVE CELL PRINTING

Current trends in high content analysis and cell assay applications require the ability to dispense a variety of cell types, of varying robustness, volume and quantity, into different sample formats including slides, plates, and non-standard formats.

Workflow demands require the printing of cells for these applications to be fast, precise, reliable, reproducible, and contamination-free. Sample solutions need to dispense cells and cell media successfully while maintaining cell viability.

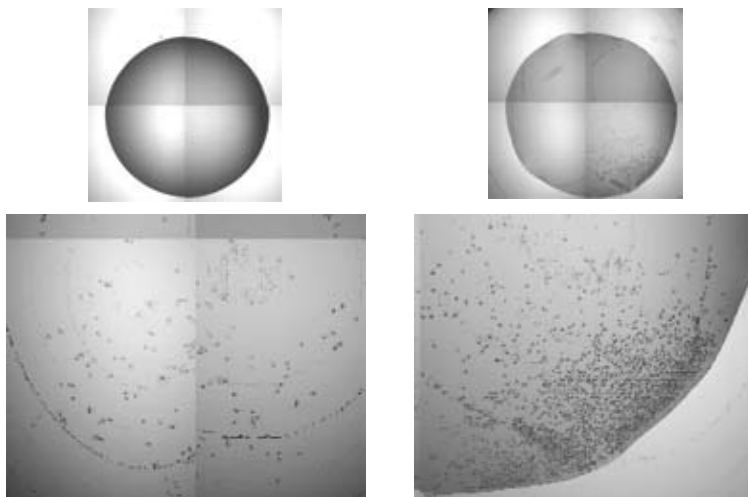
## A SOLUTION TO MEET APPLICATION DEMANDS

The CellJet Cell Printer incorporates Digilab's proprietary synQUAD liquid dispensing technology, offering both on-the-fly and drop-by-drop non-contact cell printing while maintaining the viability of even the most delicate cells.

This extremely flexible technology offers users full control over critical dispense parameters such as height of dispense and dispensing speed, which allows printing of both viscous solutions and fragile cells.



The Digilab CellJet prints into plates or onto slides using a valve-free fluid path, which greatly reduces cell damage. The printer also includes full wash capability, an easy-to-clean and sterilize evaporation cover, and an effective instrument design for hassle-free maintenance.



1 day after seeding

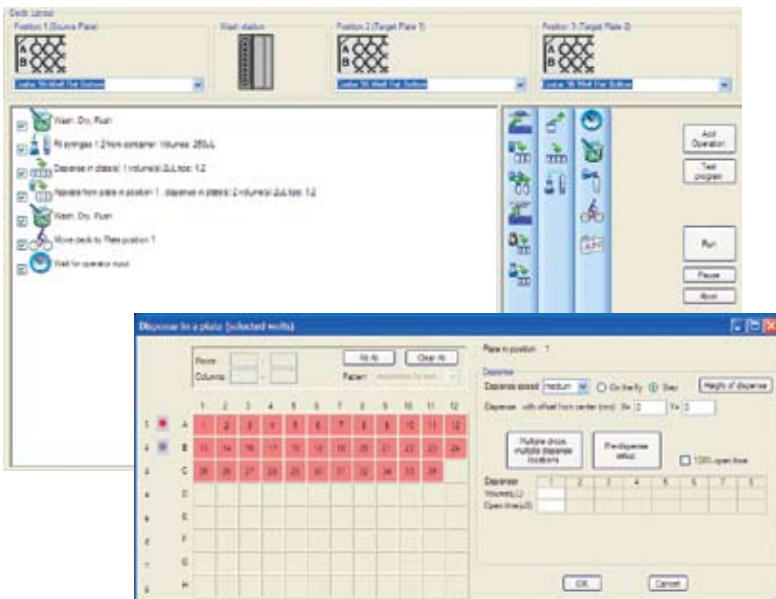
6 days after seeding

*CellJet offers the ability to dispense a droplet anywhere within a microtiter plate or to multiplate droplets spatially within a single well.*

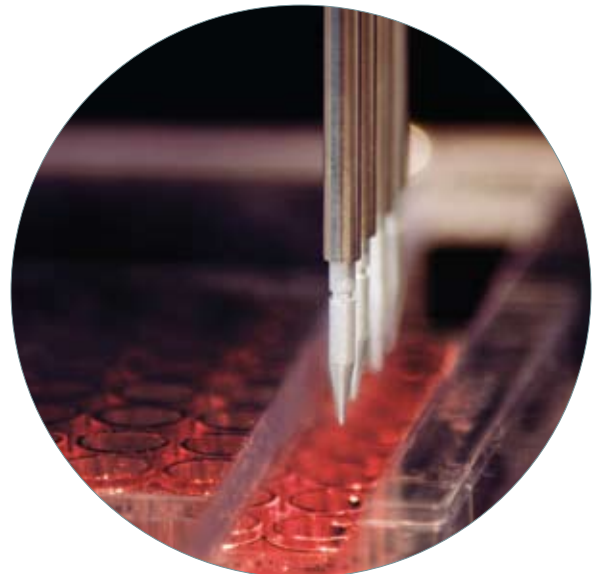
## QUICK, VERSATILE, RELIABLE SYNQUAD DISPENSE.

### CELLJET FEATURES & BENEFITS

- Systems can be configured for a wide range of applications: 1-channel for simple cell printing, 2-channel for multiple cell types or cell and reagent printing, and 4-channel for bulk dispensing of cells.
- Larger plate and deck formats are available, supporting both research and high throughput robotic integration.
- Multiple channels can be used for multiple cell lines. The CellJet supports multiplex assays without cross contamination.
- Full control of dispense height and dispensing speed, offering easy optimization, improved performance and faster results for a wide variety of cell types.
- Choice of drop-by-drop or on-the-fly dispensing modes for optimized performance and increased throughput.
- System dispenses a full range of cell types, from robust to delicate.
- synQUAD technology is able to dispense fluid types from low viscosity solvent to high viscous solutions such as 30% PEG.
- The CellJet includes a cover over each plate, which creates a micro-environment for each cell to prevent contamination and evaporation. The cover is removable for easy cleaning and sterilization.
- The CellJet can fit into most standard fume hoods or can be purchased with an enclosed chamber with optional humidity control.
- Flexible, easy-to-use software offers productivity to multiple users with minimal training.



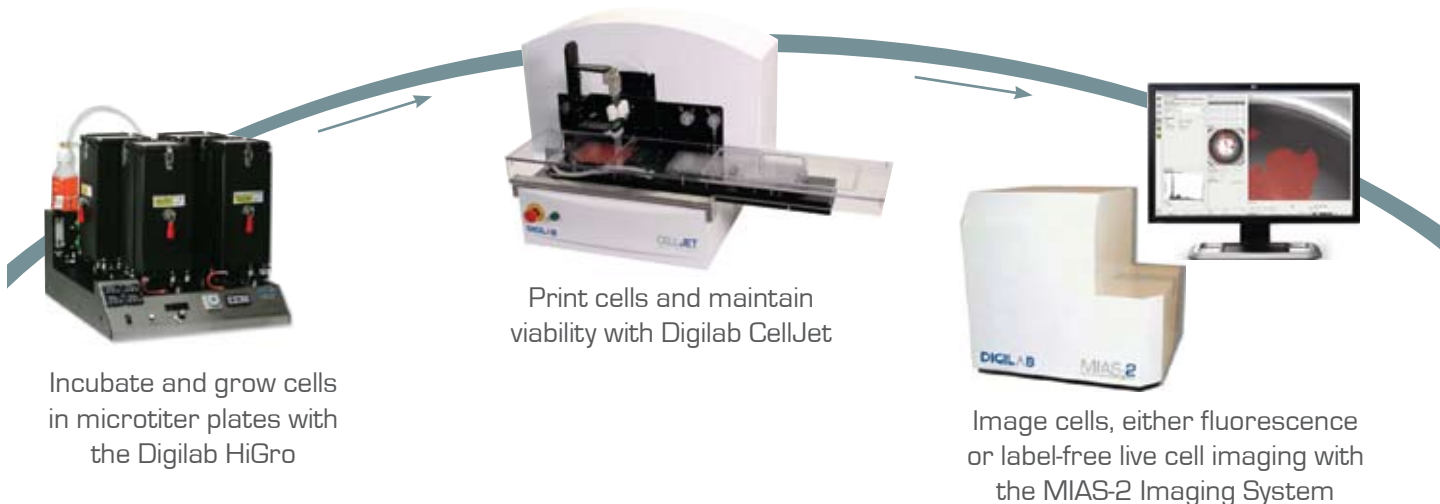
*CellJet's user-friendly software makes it easy to program printing protocols with its simple graphical format. In addition, total flexibility can be obtained for virtually any printing parameters and print patterns.*



*Cells are aspirated from their source through ceramic tips into coiled tubing and dispensed into microtiter plates or slides without making contact with any valves.*

## START TO FINISH SOLUTIONS FOR CELLULAR RESEARCH

Digilab offers the tools for complete cell assay workflow, from incubation and cell growth to cell printing and cell imaging.



### CELLJET SPECIFICATIONS

Dynamic Dispense Range:	20nL to 1mL (with 190um ceramic tip, 1 mL syringe and 1000ul loop)
Dispense Speed:	30 seconds to dispense to a 96-well plate with a 1-channel system <i>Dispense and aspirate speeds can be increased or decreased dependant upon cell type, and multiple channels can fill an entire plate faster.</i>
Positioning Performance:	Stepper Motor Resolution — 1.3um Repeatability < ±10um
Control Interface:	External PC and CellJet software are included

### ORDERING INFORMATION

CJ100001-1	CellJet, 1-channel, 110V
CJ100001-2	CellJet, 1-channel, 220V
CJ100002-1	CellJet, 2-channel, 110V
CJ100002-2	CellJet, 2-channel, 220V
CJ100004-1	CellJet, 4-channel, 110V
CJ100004-2	CellJet, 4-channel, 220V



### ABOUT DIGILAB

Digilab designs, develops, manufactures and markets sample preparation and liquid handling tools, as well as imaging and spectroscopy products and technologies for sample identification. The company's wide array of sample preparation and identification tools serve the global life science, analytical chemistry and diagnostics markets. Its differentiated products produced from a rich technology base provide the foundation for a portfolio of applications. Digilab is proud and pleased to serve thousands of customers globally.

#### WORLDWIDE OFFICE

84 October Hill Road  
Holliston, MA 01746  
United States  
Phone: 508 893 3130  
Fax: 508 893 8011

#### EUROPEAN OFFICE

1B Blackstone Road  
Huntingdon, Cambridgeshire  
PE29 6EF United Kingdom  
Phone: (+44) 1480 426 700  
Fax: (+44) 1480 426 767

#### ASIAN PACIFIC OFFICE

6th Fl. Yokohama World Porters  
2-2-1 Shinkou, Nakaku  
Yokohama, Japan 231-0001  
Phone/Fax: 045 651 6252

#### DISTRIBUTED BY



[www.digilabglobal.com](http://www.digilabglobal.com) • [info@digilabglobal.com](mailto:info@digilabglobal.com)